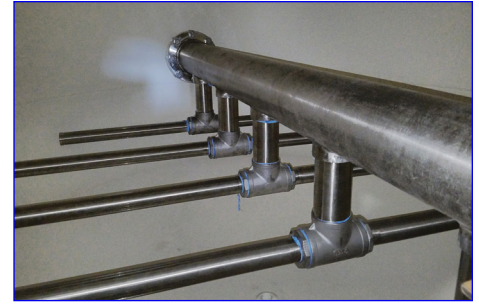


## STEEL TANK INTERNALS

Tank internals consisting of upper and lower distributor assemblies, assure proper distribution of fluid in the tanks during all cycles. The upper distributors are open pipes designed to force the inlet flow upward against the tank head. The lower distributors are slotted distributor heads to force even flow distribution during service and backwash.



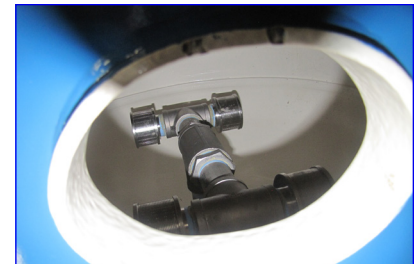
### Upper Distributors for Steel Tanks

Part Number	Tank Size Diameter	Type	Pipe Size	Connection
	in		in	
100341	20-30	Single Point	2	NPT
100343	30, 36	Single Point	3	NPT
100344	42	Single Point	3	NPT
100345	42-48	Single Point	4	NPT
100345-1	48	Single Point	4	Flanged
100347	48	Single Point	6	Flanged



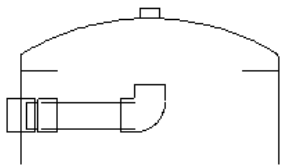
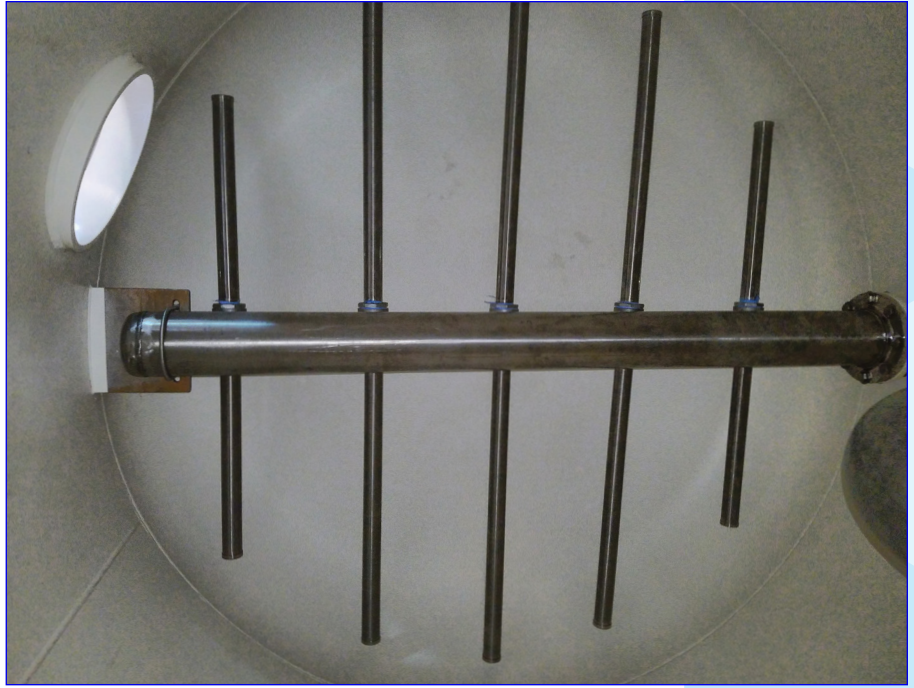
### Lower Distributors for Steel Tanks

Part Number	Tank Size Diameter	Type	Pipe Size	Connection
	in		in	
500000-1	20-24	Two Point	2	NPT
500000-2	30	Four Point	2	NPT
500000-3	30-36	Four Point	3	NPT
500000-5	42	Six Point	3	NPT
500000-5-4	40	Six Point	4	NPT
500000-6	48-72	Hub and Lateral	4	NPT
500000-6-4F	48-72	Hub and Lateral	4	Flanged
500000-6-6F	48-72	Hub and Lateral	6	Flanged
500000-7-6F	48-72	Hub and Lateral	6	Flanged

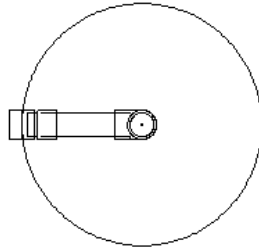


- Additional sizes are available.
- Available material options are PVC, 304 Stainless Steel, and 316 Stainless Steel.

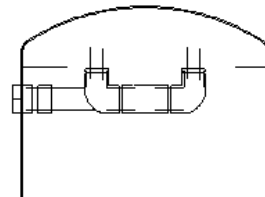




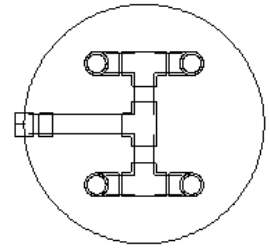
**SINGLE POINT UPPER ASSEMBLY**  
Side View



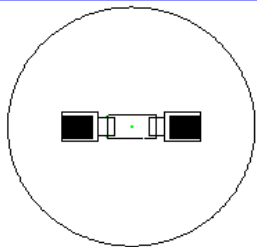
**SINGLE POINT UPPER ASSEMBLY**  
Top View



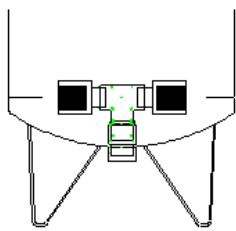
**FOUR POINT UPPER ASSEMBLY**  
Side View



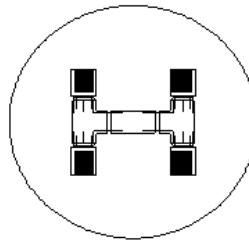
**FOUR POINT UPPER ASSEMBLY**  
Top View



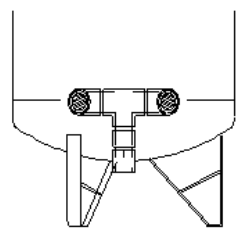
**TWO POINT BOTTOM ASSEMBLY**  
Top View



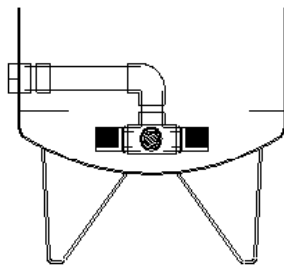
**TWO POINT BOTTOM DISTRIBUTOR**  
Side View



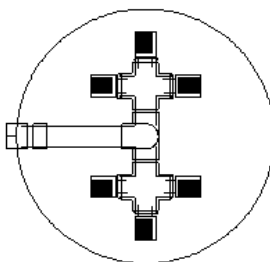
**FOUR POINT BOTTOM ASSEMBLY**  
Top View



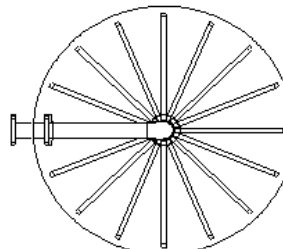
**FOUR POINT BOTTOM ASSEMBLY**  
Side View



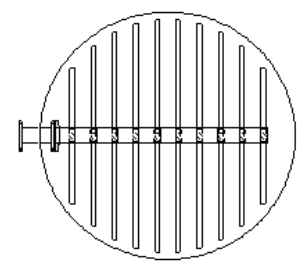
**SIX POINT BOTTOM ASSEMBLY**  
Side View



**SIX POINT BOTTOM ASSEMBLY**  
Top View



**HUB AND LATERAL**  
Top View



**HEADER AND LATERAL**  
Top View