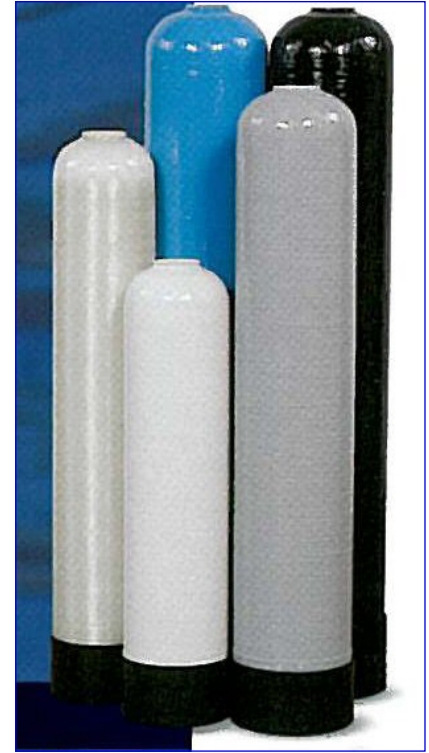


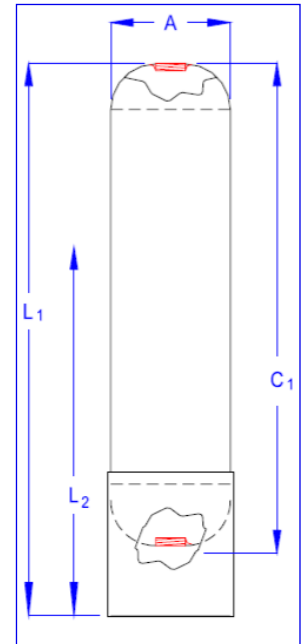
POLYGLASS TANKS

Polyglass tanks are an economical lightweight alternative to steel tanks. Features include limited maintenance and high corrosion resistance. Commonly used in residential and small commercial applications. Each polyglass tank is certified by the WQA and NSF 44. Bottom drains are available upon request and are advisable for freezing conditions and mobile units.



Standard Features	
Design	Noncode
External Material	Polyglass
Internal Material	Polyethylene
Base	Circular
Color	Blue
Temperature Range	32-120°F
Max Allow. Work Pressure	150 psi at 4:1 SF
Vacuum	0 psi
Manufacturer's Warranty	5 years

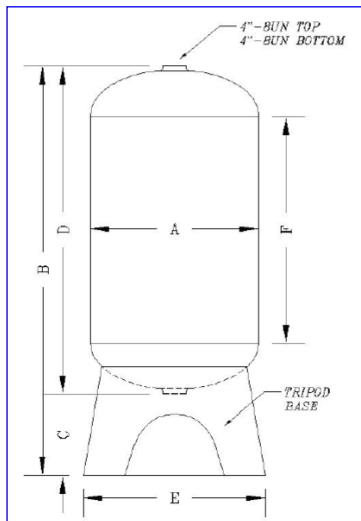
Standard Polyglass Tank Properties								
Stock	Part Number	Size	Standard	Tank	Height	Height	Volume	Volume
		Dia x Ht	Opening	Height	Standard	Extended		
		in	in	in	in	in		
	100200	6x18	2.5	18.0	18.8	-	1.8	0.24
	100009	7x44	2.5	43.4	44.0	-	6.7	0.9
	100048	8x44	2.5	44.1	44.5	-	8.7	1.2
	100188	9x48	2.5	47.9	48.7	-	11.8	1.6
	100007	10x40	2.5	40.1	40.3	-	11.5	1.54
	100013	10x54	2.5	54.6	54.4	-	16.4	2.2
•	100044	12x52	4-8UN	52.4	53.4	-	22.2	2.97
•	100046	13x54	4-8UN	54.0	54.9	-	27	3.6
•	100017	14x65	4-8UN	65.0	66.1	-	38	5.1
	100017-1	14x65	4-8UN/4-8UN	65.0	-	70.5	38	5.1
	100087	16x65	4-8UN	65.0	65.9	-	49	6.6
	100087-1	16x65	4-8UN/4-8UN	65.0	-	78.8	49	6.6



COMPOSITE TANKS

Composite tanks are an economical lightweight alternative to steel tanks. Features include limited maintenance and high corrosion resistance. Commonly used in commercial and industrial applications. Composite tanks are tested and certified to NSF/ANSI 61 for material and structural integrity requirements. Bottom drains are available upon request and are advisable for freezing conditions and mobile units.

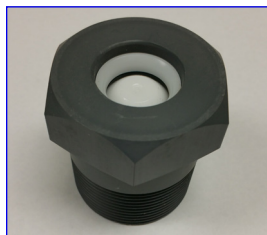
Standard Features	
Design	Noncode
External Material	Fiberglass
Internal Material	Polyethylene
Base	Circular/Tripod
Color	Natural/Blue
Temperature Range	32-120°F Threaded 32-150°F Flanged
Max Allow. Work Pressure	150 psi at 4:1 SF
Vacuum	0 psi
Manufacturer's Warranty	5 years



Standard Composite Tank Properties

Stock	Part Number	Size	Standard Top Opening	Standard Bottom Opening	Tank Height D	Height Standard Base B ₁	Height Extended Base B ₂	Height Tripod Base B ₃	Volume	Volume
		Dia x Ht	in	in	in	in	in	in	in	gal
•	100089	21x62	4-8UN	-	63.4	67.0	-	-	84.0	11.2
	100089-1	21x62	4-8UN	4-8UN	63.5	-	72.8	-	84.0	11.2
	100089-2	21x62	4-8UN	4-8UN	62.6	-	-	79.8	84.0	11.2
•	100187	24x72	4-8UN	-	70.1	74.2	-	-	118.0	15.8
	100187-1	24x72	4-8UN	4-8UN	70.3	-	80.4	-	119.0	15.9
	100187-3	24x72	4-8UN	4-8UN	70.0	-	-	86.9	119.0	15.9
	100190	30x72	6-8UN	6-8UN	70.2	-	-	85.8	187.0	25.0
	100189	36x72	6-8UN	6-8UN	70.5	-	-	85.0	264.0	35.3
	100191	42x72	6F	6F	73.0	-	-	90.1	345.0	46.1
	100192	48x72	6F	6F	76.0	-	-	91.9	463.0	61.9

- Flexible connections must be installed between hard piping and tank openings. Failure to install flex connection will void the warranty.
- Additional vessels and configurations are available. The vessels shown above are the most common.



P/N: 410239

Don't forget the vacuum breaker!